

INCANDESCENT LANDING AND TAXI RECOGNITION LIGHTS - MAINTENANCE PRACTICES

1. General

- A. This section gives the procedures for the removal/installation and adjustment/test of the incandescent landing and taxi recognition lights.

2. Landing and Taxi Recognition Lights Removal/Installation

- A. Remove Landing and Taxi Recognition Lights (Refer to Figure 201).
- (1) Carefully remove the sealer from the pitot probe mast and the lens retainer.
 - (2) Remove screws (3) securing lens retainer (1) and remove lens (2).
 - (3) Loosen the lamp bracket screws (5) sufficiently enough to pull the lamp forward and out of the bracket.
 - (4) Disconnect the electrical leads from the lamp terminals.
 - (5) Remove the lamp from the light assembly.

- B. Install Landing and Taxi Recognition Lights (Refer to Figure 201).

- (1) Put the lamp close to the light assembly.
- (2) Connect the electrical leads to the lamp (7) terminals.
- (3) Put the lamp (7) between the bracket (5) and the plate (8).
 - (a) Tighten the lamp bracket screws.
- (4) Install the lens (2) and lens retainer (1) with the screws (3).
 - (a) Seal the pitot probe mast with Type I, Class B sealant. Refer to Chapter 20, Fuel, Weather and High-Temperature Sealing - Maintenance Practices.

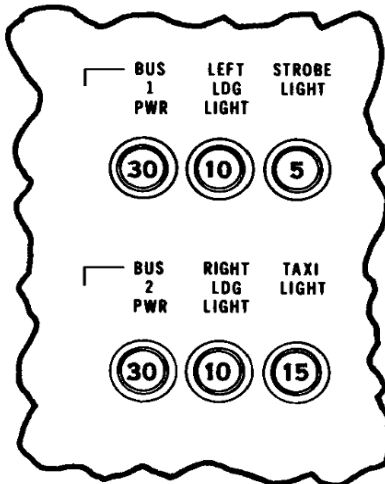
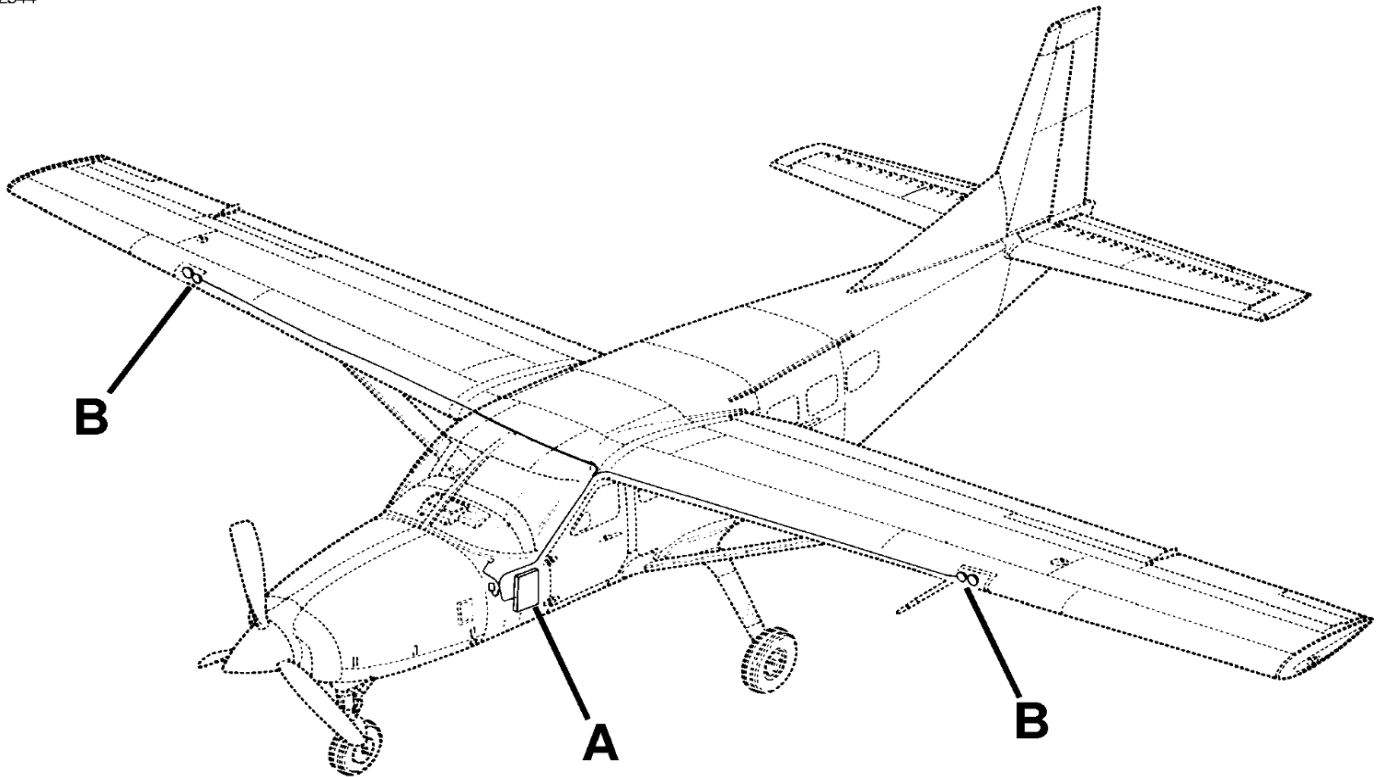
NOTE: If you are going to do the Landing and Taxi Recognition Lights Adjustment/Test do not install the lens (2) and lens retainer (1) until the adjustment/test is complete.

3. Landing and Taxi Recognition Lights Adjustment/Test

- A. Adjust the Landing and Taxi Recognition Lights (Refer to Figure 201).
- (1) Park airplane 50 feet from a wall or any suitable light reflecting surface.
 - (2) If necessary, carefully remove the sealer from the pitot probe mast and the lens retainer.
 - (3) If necessary, remove screws (3) securing lens retainer (1) and lens (2).
 - (4) Level the airplane. Refer to Chapter 8, Leveling - Maintenance Practices. Ensure pilot seat rail is on a horizontal plane.
 - (5) Measure distance from ground surface up to center of lamps.
 - (6) Apply external power and place master switch in the ON position.
 - (7) Turn landing/taxi light switch ON.
 - (8) Align lamps focal point straight forward and at a height 63 inches below center of lamps as measured in step 4, using alignment screws (4).
 - (9) Turn landing/taxi light switch OFF.
 - (10) Disconnect external power. Turn master switch OFF.
 - (11) Reinstall lens.
 - (12) Seal the pitot probe mast with Type II Class II sealant. Refer to Chapter 20, Fuel, Weather and High-Temperature Sealing - Maintenance Practices
 - (13) If necessary polish the landing light lens.
 - (a) For airplanes with the TKS Anti-Ice system (fairing installation) installed apply masking tape to the Boundary Layer Energizers (BLE) with tape before you polish the lens. Refer to Figure 201.

Figure 201 : Sheet 1 : Landing and Taxi Lights Installation

A22344

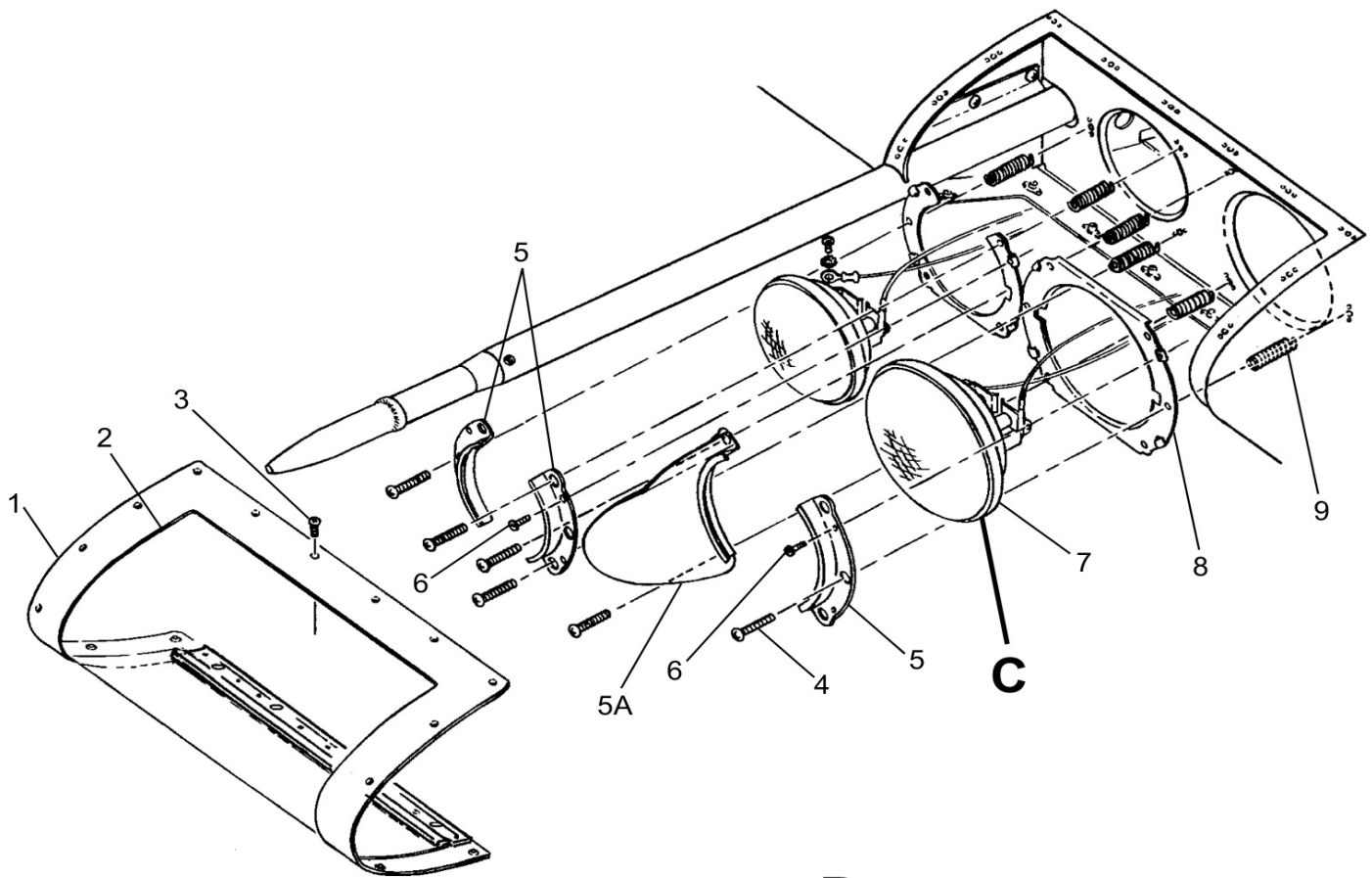


DETAIL A

26184002
A2618X1160

Figure 201 : Sheet 2 : Landing and Taxi Lights Installation

A22347



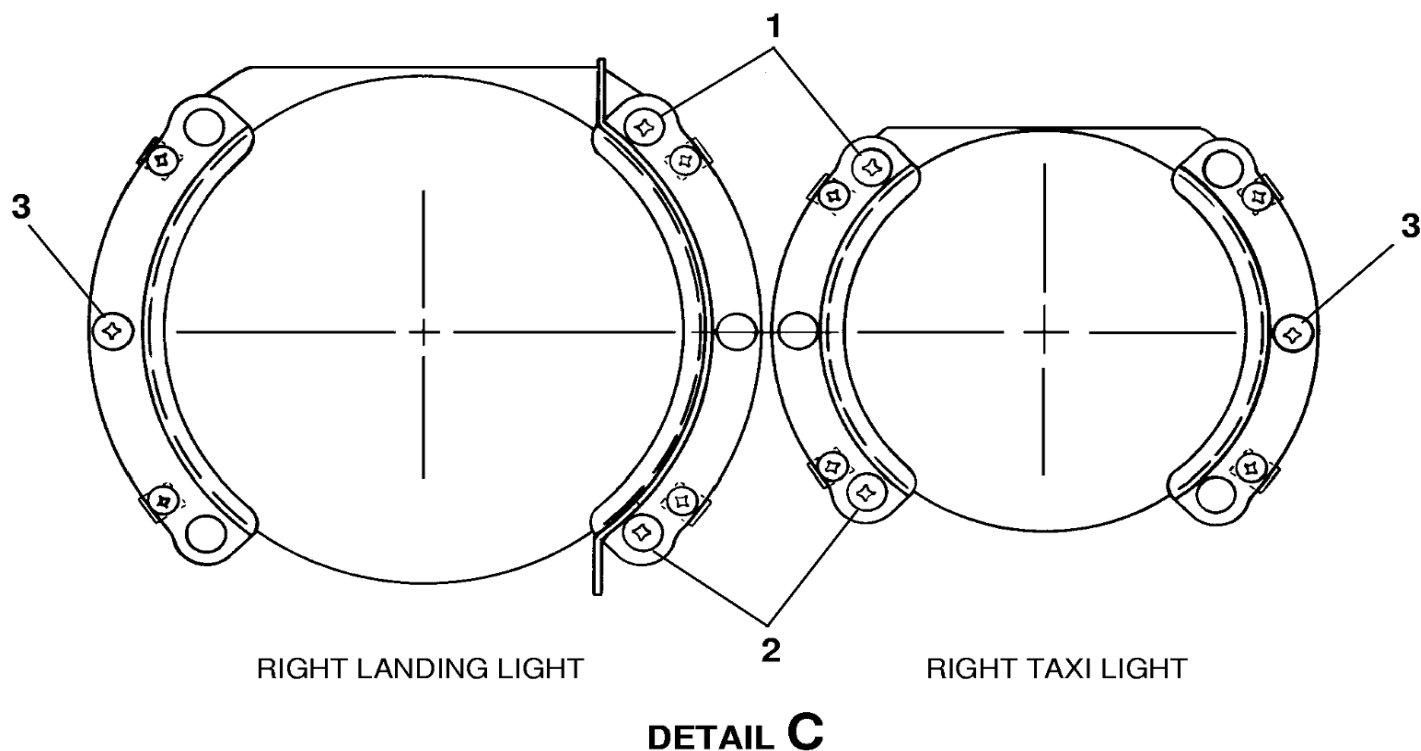
DETAIL B
LEFT WING SHOWN,
RIGHT WING TYPICAL

- 1. LENS RETAINER
- 2. LENS
- 3. SCREW
- 4. SCREW
- 5. BRACKET
- 5A. BRACKET AND BAFFLE ASSEMBLY
- 6. SCREW
- 7. LAMP
- 8. PLATE
- 9. SPRINGS

B2618R1027

Figure 201 : Sheet 3 : Landing and Taxi Lights Installation

A22349

**LIGHT BEAM ADJUSTMENT PROCEDURES FOR LANDING AND TAXI/RECOGNITION LIGHTS**

1. TO LOWER LIGHT BEAM, UNSCREW SCREW (1) AND/OR TIGHTEN SCREW (2).
2. TO RAISE LIGHT BEAM, UNSCREW SCREW (2) AND/OR TIGHTEN SCREW (1).
3. LEFT OR RIGHT LIGHT BEAM MOVEMENT IS ACHIEVED BY TURNING SCREW (3).

C2618X1161

Figure 201 : Sheet 4 : Landing and Taxi Lights Installation

